



Edward J. Miller, Sr. Blood Donor Center at Children's National

The New Facility

Hours of Operation

Monday: 7am to 4pm
Tuesday: 7am to 4pm
Wednesday: 7am to 4pm
Thursday: 7am to 4pm
Friday: 7am to 4pm
Saturdays* 8am to 4pm

**The Saturday schedule varies each month.*

Contact Information

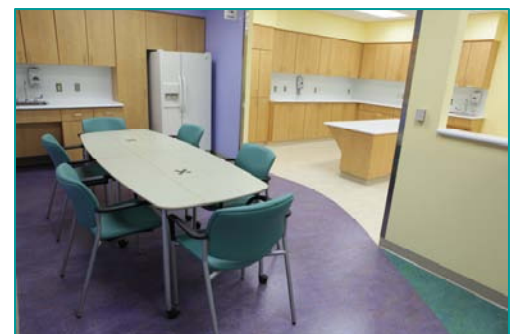
202-476-KIDS (5437)

BloodDonorCenter@cnmc.org

**childrensnational.org/
donateblood**

Key Facts

- The new Blood Donor Center is larger, brighter, and more open than the previous space.
- The center is designed to enable staff to see every donor from anywhere in the center, throughout the entire donation process.
- The center also is designed to make the donation process more smooth for donors.
- Now, donors move counter clockwise through the center— from registration to screening, collection, refreshments, and scheduling the next donation appointment.
- An additional donor bed allows for up to two additional platelet donors each day, for a total of up to 44 donors each month.



www.childrensnational.org

111 MICHIGAN AVENUE, NW, WASHINGTON, DC 20010 202-476-BEAR